



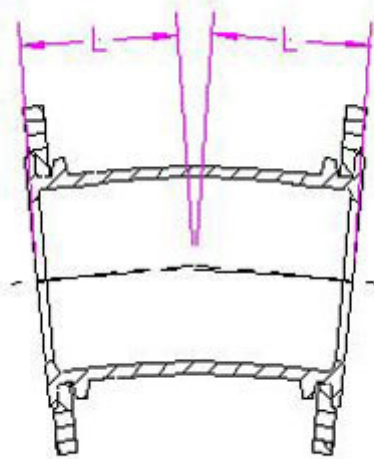
AL SAAD CO

ENGINEERING CONSULTING

Ductile Iron Rotating Flange Fittings

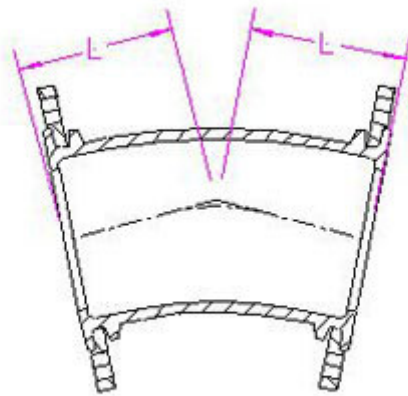
11¼° Rotating Flange Bend (Class K12)

Nominal Bore	Dimensions	Weight	
		Epoxy	Lined
mm	L mm	Kgs.	Kgs.
80	110	10	12
100	115	11	13
125	120	16	18
150	130	19	21
200	145	27	30
250	165	39	42
300	175	52	56



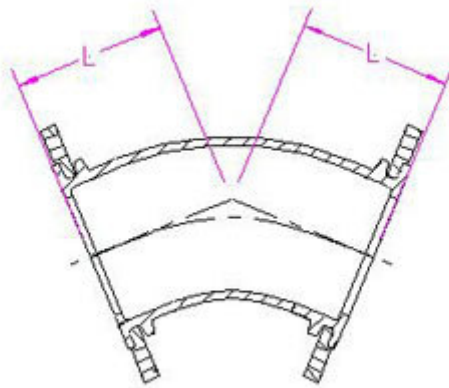
22½° Rotating Flange Bend (Class K12)

Nominal Bore	Dimensions	Weight	
		Epoxy	Lined
mm	L mm	Kgs.	Kgs.
80	120	10	12
100	130	12	14
125	140	16	18
150	150	21	23
200	170	30	33
250	190	38	41
300	210	52	56



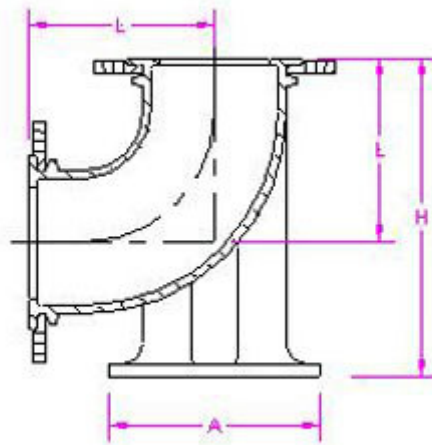
45° Rotating Flange Bend (Class K12)

Nominal Bore mm	Dimensions L mm	Weight	
		Epoxy Kgs.	Lined kgs.
80	130	10	12
100	140	12	14
125	150	16	18
150	160	21	23
200	180	30	33
250	245	42	46
300	275	60	64



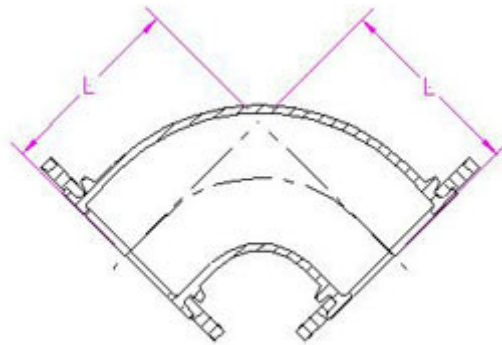
90° Rotating Flange Duckfoot Bend (Class K12)

Nominal Bore	Dimensions			Weight	
				Epoxy	Lined
mm	L mm	H mm	A mm	Kgs.	Kgs.
80	165	110	180	14	17
100	180	125	200	18	21
125	200	140	225	25	28
150	220	160	250	33	36
200	260	190	300	50	56
250	350	225	350	80	87
300	400	255	400	116	124



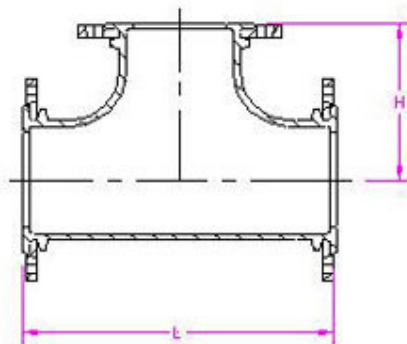
90° Rotating Flange Short Radius Bend (Class K12

Nominal Bore	Dimensions	Weight	Lined
		Epoxy	
mm	L mm	Kgs.	Kgs.
50	150	8	9
80	165	9	10
100	180	11	12
125	200	18	19
150	220	22	23
200	260	32	34
250	350	53	57
300	400	75	80



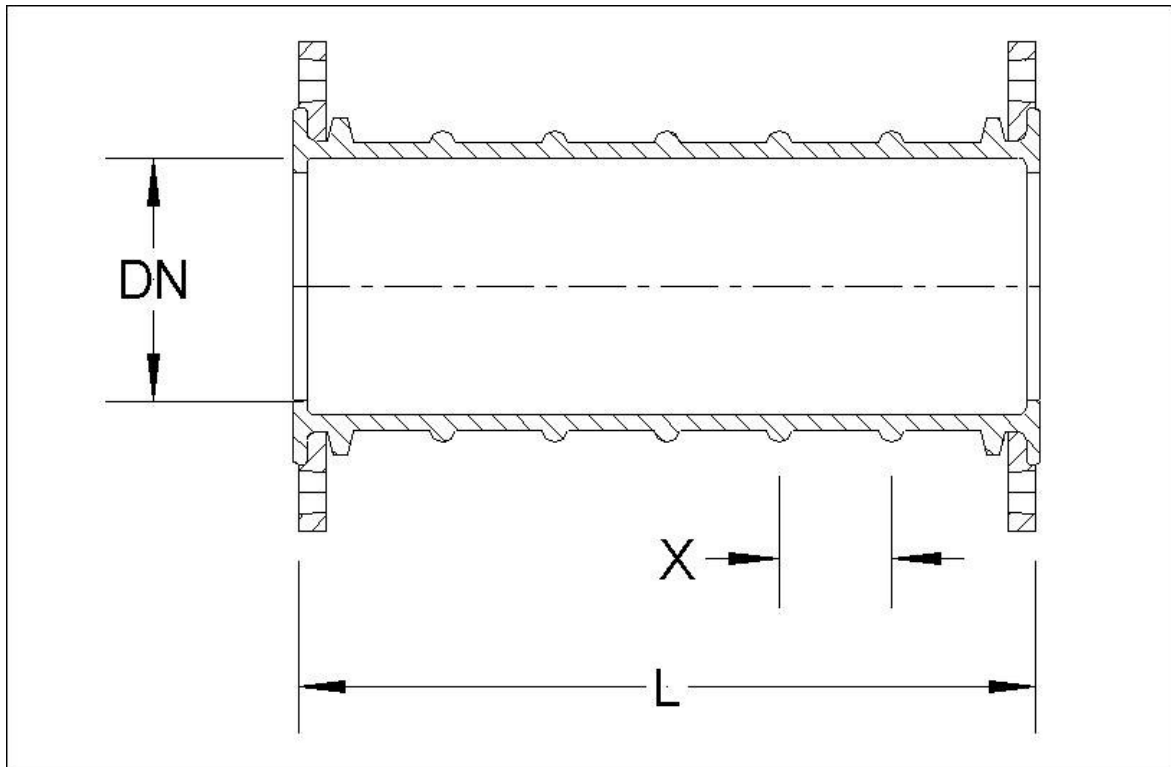
Rotating All Flange Tee (Class K14)

Nominal Bore		Dimensions		Weight	
Body	Branch			Epoxy	Lined
mm	mm	L mm	H mm	Kgs.	Kgs.
80	80	330	165	16	17
100	80	330	170	18	19
100	100	360	180	19	20
125	80	350	185	19	20
125	100	370	195	21	22
125	125	400	200	25	26
150	80	360	205	27	29
150	100	380	205	29	31
150	125	410	215	34	36
150	150	440	220	34	37
200	80	380	225	37	41
200	100	400	230	39	43
200	150	460	245	44	48
200	200	520	260	49	53
250	80	405	265	51	56
250	100	425	270	56	62
250	150	485	280	61	67
250	200	540	290	68	75
250	250	600	300	80	87
300	80	425	295	67	74
300	100	450	300	71	79
300	150	505	210	78	86
300	200	565	320	85	91
300	250	620	330	95	103
300	300	680	340	105	113



Rotating Double Flange Wall Pipe (Class K12)

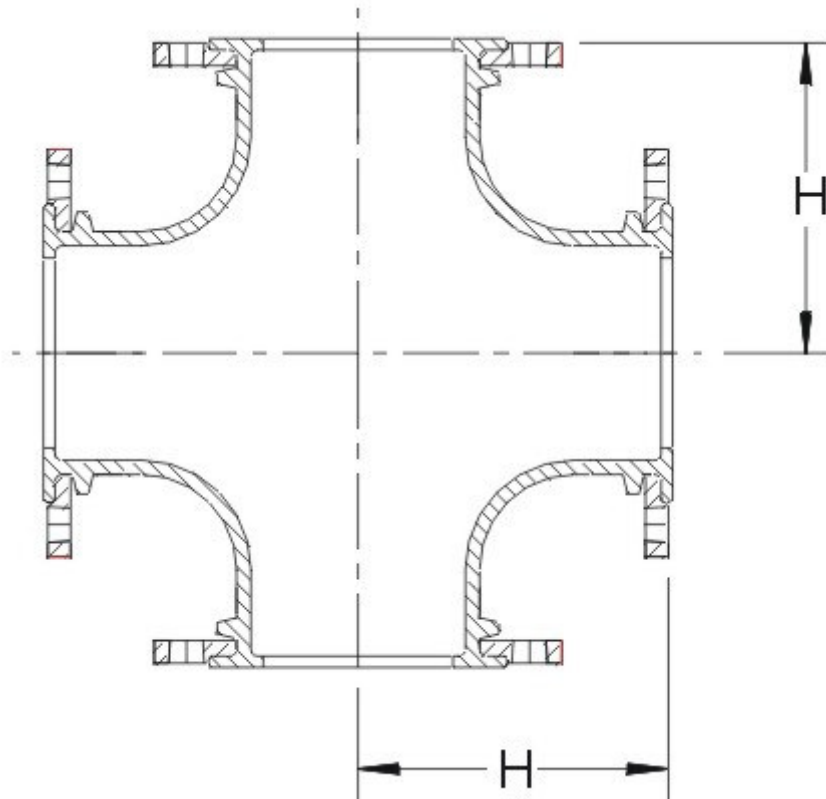
Nominal Bore	Length	Weight	
		Epoxy	Lined
mm	L mm	Kgs.	Kgs.
80	800	21	22
100	800	22	23
150	800	34	36
200	800	43	46
250	800	66	72
300	800	102	110



X = 100mm Ridge to Ridge

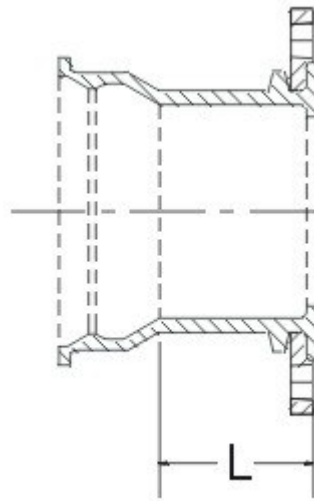
Rotating Flange Cross (Class K14)

Nominal Bore	Dimensions		Weight	
			Epoxy	Lined
mm	L mm	H mm	Kgs.	Kgs.
80	330	165	20	22
100	360	180	24	26
150	440	220	48	51
200	520	260	58	63
250	700	350	100	106
300	800	400	132	140



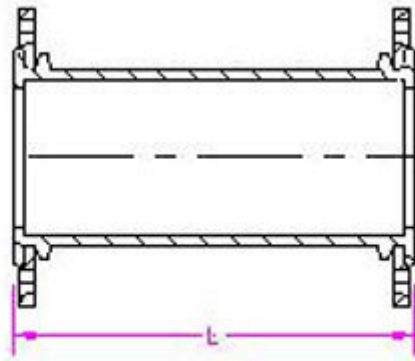
Rotating Flange MJ Socket Piece (Class K12)

Nominal Bore mm	Dimensions L mm	Weight	
		Epoxy Kgs.	Lined Kgs.
80	130	9	10
100	130	11	12
125	135	18	19
150	135	20	21
200	140	23	25
250	145	32	34
300	150	38	40
400	160	71	75



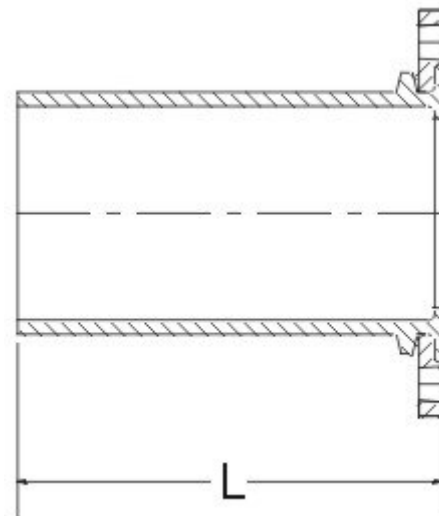
Rotating Flange Riser Pipes (Class K12)

Nominal Bore	Length	Weight	
		Epoxy	Lined
mm	L mm	Kgs.	Kgs.
80	100	7	8
80	150	8	9
80	200	8	9
80	250	9	10
80	300	10	10
80	350	10	11
80	400	11	12
80	450	12	13
80	500	12	15
80	600	14	16
80	650	14	16
80	700	15	17
80	1000	19	21
100	100	9	10
100	150	9	10
100	200	10	11
100	250	11	13
100	300	12	14
100	350	13	15
100	400	14	16
100	450	15	17
100	500	15	17
100	600	17	19
100	1000	24	27
150	100	12	13
150	150	14	15
150	200	13	14
150	250	15	16
150	300	17	19
150	350	19	21
150	400	20	22
150	450	22	24
150	500	25	27
150	1000	38	40
200	200	19	20
200	300	25	27
200	400	29	31
200	500	33	35
250	200	27	39
250	300	31	33
250	500	39	42
300	250	42	45
300	300	47	50
300	500	59	63



Rotating Flange Spigot Piece (Class K12)

Nominal Bore	Dimensions	Weight	
		Epoxy	Lined
mm	L mm	Kgs	Kgs.
80	350	8	9
100	360	10	11
150	380	16	17
200	400	23	25
250	420	33	35
300	440	45	48



Rotating Flanged Concentric Taper

Tapering		Dimensions L mm	Standard A. B. DIN	Weight	
From mm	To mm			Epoxy Kgs.	Lined Kgs.
100	80	195	B.	9	10
100	80	200	A. DIN	10	11
125	80	200	DIN	11	12
125	100	185	B.	11	12
125	100	200	A. DIN	12	13
150	80	200	A. DIN	12	13
150	80	260	B.	14	15
150	100	200	A. DIN.	13	14
150	100	220	B.	15	16
150	125	190	B.	18	20
150	125	200	A. DIN	18	20
200	80	300	A. DIN	19	21
200	80	390	B.	21	23
200	100	300	A. DIN	19	21
200	100	330	B.	20	22
200	125	300	DIN	22	25
200	150	235	B.	21	24
200	150	300	A. DIN	22	24
250	100	300	A. DIN	26	29
250	100	455	B.	30	33
250	150	300	A. DIN	27	30
250	150	345	B.	30	33
250	200	250	B.	30	33
250	200	300	A. DIN	31	34
300	100	300	A. DIN	33	37
300	100	560	B.	41	45
300	150	300	A. DIN	36	40
300	150	470	B.	42	46
300	200	300	A. DIN	38	42
300	200	360	B.	41	45
300	250	265	B.	39	44
300	250	300	A. DIN	40	45

